

SAFARI JOURNEY

# African Walkabout

A SAFARI FROM WINDHOEK IN NAMIBIA TO VICTORIA FALLS IN ZIMBABWE

**22 DAYS**



**WALKABOUT**

GOURMET ADVENTURES

## Journey Overview

Our African Walkabout Safari offers a truly unique experience where you will discover three of the jewels of Southern Africa: Namibia, Botswana, and Victoria Falls. The main highlights in terms of regions are Sossusvlei, Swakopmund, Twyfelfontein, Etosha National Park, Western Caprivi, Chobe National Park, and Victoria Falls.

Although Namibia is situated on the Atlantic coast of Africa, the general landscape is dominated by the oldest desert in the world—the Namib. The surrounding areas are dry and visually impressive, with interesting flora and fascinating geological formations. In Namibia, we come “face to face” with a variety of big game, including elephants, lions, giraffes, zebras, and more. It is a once-in-a-lifetime experience seeing these wild animals in their natural habitat. Spending five nights in one of the greatest wildlife parks in the world, Etosha, is a real privilege.

Botswana is known to be hot and dry, except for the lush oasis beside the Caprivi. Largely off the beaten track, Botswana is a haven for wildlife, especially elephants.

Victoria Falls is the largest waterfall in the world, making it one of the world’s Seven Natural Wonders! In the 1800s, Victoria Falls was described by the nearby Kololo people as ‘Mosi-oa-Tunya,’ which means “the smoke that thunders”—a name that illustrates the powerful forces of the falls. David Livingstone is believed to be the first European explorer to discover Victoria Falls; in 1860, he shared the story of his travels



# Journey Schedule

**DAY 1**

Sossusvlei, Namibia

**DAY 2**

Sossusvlei, Namibia

**DAY 3**

Swakopmund, Namibia

**DAY 4**

Spitzkoppe Region, Namibia

**DAY 5 & 6**

Twyfelfontein Region, Namibia

**DAY 7 & 8**

Grootberg, Namibia

**DAY 9 & 10**

Etosha National Park, Dolomite, Namibia

**DAY 11 & 12**

Etosha National Park, Okaukuejo, Namibia

**DAY 13**

Etosha National Park, Namutoni, Namibia

**DAY 14 & 15**

Kavango River, Namibia

**DAY 16 & 17**

Cavprivi, Namibia

**DAY 18 & 19**

Chobe National Park, Botswana

**DAY 20**

Chobe National Park to Victoria Falls, Zimbabwe

**DAY 21**

Victoria Falls, Zimbabwe

**DAY 22**

Depart From Victoria Falls

## Journey Itinerary



### DAY 1

#### Sossusvlei, Namibia

Welcome to Southern Africa! We are delighted to have you with us on this wonderful African safari experience. The safari will depart in Windhoek at 9.00 a.m. from the Movenpick Safari Court Hotel. Please arrive in Windhoek the night before so that you are rested for the commencement of the safari the next day. After we meet in the morning, we shall make our way to Sossusvlei. Over the next two days, you will explore the impressive sand dunes that this region is renowned for, including Dune 45 and some of the largest dunes in the world. Sossusvlei is where you will find the iconic red sand dunes of the Namib. The clear blue skies contrast with the giant red sand dunes to make this one of the natural wonders of Africa and a photographer's haven. Aside from the attractions at Sossusvlei – Dune 45, Hiddenvlei, Big Daddy and Deadvlei –

there are other attractions in the area which include the Sesriem Canyon and Namib-Naukluft National Park, where the mountains of the Namib meet the plains.

Sossus Dune Lodge is nestled against the low-lying mountains in the Namib-Naukluft National Park, providing guests with breath-taking views across the plains to the surrounding dunes. Built in a village style, the lodge blends in with its surroundings and was built with the utmost care paid to the environment. Falling under the Namibia Wildlife Resorts umbrella, Sossus Dune Lodge is the only lodge that is situated inside of the Namib-Naukluft National Park. This allows guests the benefit of being able to reach Sossusvlei before the sun rises and to leave after the sun sets. After an adventurous day of exploring the area, you can sit back and relax in the utmost comfort under the large, expansive African sky.

Accommodation is offered in 25 thoughtfully designed chalets, arranged in a layout inspired by traditional African villages. Each thatched chalet blends natural materials like wood and canvas with modern comforts and features large glass walls that frame stunning views of the surrounding landscape. Inside, warm wooden finishes and tasteful furnishings create a refined yet relaxed atmosphere. Every chalet includes a private ensuite bathroom, equipped with essential amenities and eco-conscious touches for a comfortable and sustainable stay.

 **330 KMS**

 **SOSSUS DUNE LODGE OR SIMILAR**

 **DINNER AT LODGE**



## DAY 2

### Sossusvlei, Namibia

Today we visit the world's highest sand dunes. At sunrise we enter the park and catch the first rays of light hitting these red sand dunes which can reach a height of more than 300 metres. It is spectacular and provides a fantastic photo opportunity. We stop at Dune 45 and begin our walk to the top of this impressive dune - the view from the top is unforgettable. It may look high, but it is actually only 85 metres in altitude and can be easily climbed. Returning to our vehicle we enjoy a well-earned outdoor breakfast and then drive onto the "Vlei" which is a salt and clay pan surrounded by huge red dunes. On our return to our lodge we also stop for a short walk in the Sesriem Canyon, which was carved millions of years ago by the Tsauchab River. After such an early start you will probably want to relax back at our very comfortable lodge this afternoon. For those wanting an optional activity there are light plane trips over the dunes all the way to the coast for anyone who is interested. Enjoy another delicious dinner under the stars in the outdoor restaurant.

 **100 KMS**

 **SOSSUS DUNE LODGE OR SIMILAR**

 **BREAKFAST & DINNER AT LODGE**



## DAY 3

### Swakopmund, Namibia

The day is spent driving through the oldest desert on earth which incorporates the Namib Naukluft National Park on our way to Swakopmund. The Namib-Naukluft Desert is an ancient land with an ageless spirit. It is home to some of the rarest plant and animal species in the world and sightings of this flora and fauna on a Namibian safari are a must. The animals of this harsh landscape include the Oryx, Springbok and Hartmann's Mountain Zebra. One can also see the Welwitschia mirabilis, which is an odd-looking desert shrub and some of these 'shrubs' are estimated to be over 1,500 years old.

We arrive on the coast at the bustling port city of Walvis Bay – its is Namibia's 3rd largest city supporting a strong fishing industry. Dolphins and Seals are plentiful and whales are often seen. The nearby 10 kilometre long lagoon of Sandwich Harbour is a special treat. In this large natural lagoon more than 120,000 birds have been counted, including pelicans and flamingos. After lunch we arrive in the charming coastal town of Swakopmund where can soak up the atmosphere of this quaint little 'German' town and enjoy its beauty and lovely coastal setting.

Our comfortable and quiet hotel is centrally located in the centre of town and only a few hundred meters from the ocean. Tonight is a free evening so you can try one of the many restaurants in town.

 **360 KMS**

 **HOTEL A LA MER OR SIMILAR**

 **BREAKFAST AT LODGE, FREE EVENING**



## DAY 4

### Swakomund -The Etusis Nature & Game Reserve

This morning, we leave the bustling coastal town of Swakomund and make our way inland to the Etusis Nature & Game Reserve where our comfortable lodge is located. The 22,000-hectare reserve is comprised of 3 main scenic areas – the Etusis Marbel Mountains, the Otjpatera Mountain Range and the Etusis Plains. All the areas of the reserve attract a variety of wild animals. The Hartmann Bergzebra can be found everywhere – from the plain to almost the highest peaks. In 1993, when the reserve was founded, it was threatened with extinction in this area. Volker and Susanne Ledermann therefore set up the Etusis Foundation for the Conservation of Hartmann Mountain Zebra in cooperation with the Zurich Zoo. Today, the population has recovered well and on almost every Scenic Drive the zebras show up for the guests. The king of the reserve is the leopard – although rarely seen, his tracks are everywhere in the sand and the territories also extend up into the Etusis mountains. One of his favorite preys are the ubiquitous Chacma Baboons who prefer to live on the rocks of the Marble Mountains. In addition, there are a variety of antelopes – Kudus, Oryx, Impalas, Springbok and in the mountains the graceful Klipspringer. The antelope's features are also followed by other hunters, especially the lithe cheetah, the shy heraldic animal. Those who go out at night, on the other hand, get to know a completely different animal world: Aardwolves, Civet Cats, Brown Hyenas, the Springhare reminiscent of a kangaroo, the awe-wrening aardvark or the cute, but defensive porcupines are just a few creatures of the Etusis Nights. A rich birdlife also flies above Etusis: from the tiny hummingbird to the ostrich, from the weaver bird to different types of eagles, from the colorful bee-eaters and hornbills during the day to the owls of the night many species are represented. Arriving early afternoon, we have time to settle into our very comfortable lodge. Enjoy the pool to cool off and have a relaxing drink in the lounge. Before dinner we shall be treated to a sundowner's game drive where we are likely to see a variety of wild animals. One of the special features of this very personalised lodge is the delicious food which is prepared by lodge chefs, Geena and Silvanus. The majority of the ingredients used come from their own production or from farms in the area. For dairy foods (yogurt, cheese, feta, ice cream) and meat they keep their own cattle and sheep, game comes from hunting farms in the area (as within the reserve there is strictly no shooting). Bread and cakes are also

home-made. But most importantly is the warm welcome and service we shall receive from our hosts and their staff.

 **220 KMS**

 **ETUSIS LODGE OR SIMILAR**

 **BREAKFAST & DINNER AT LODGE**



## DAY 5

### Twyfelfontein Region, Namibia

After a hearty breakfast we make our way in a northerly direction towards the famous Twyfelfontein Region. We head inland across the desert plains to Twyfelfontein to view the ancient bushmens' paintings and engravings. Twyfelfontein was named a world heritage site in 2007, the first Namibian location to receive this honour. It is in essence a huge 'open-air gallery' with the largest single concentration of rock art engravings in Southern Africa.

Not only did the Khoi-San and tribes of ancient years leave the area with a true cultural heritage but the whole area is characterised by natural wonders such as Doros Crater, Burnt Mountain, Organ Pipes, Petrified Forest and desert adapted animals - of which the desert-adapted elephant is probably the most well-known species.

Our lodge for the next two nights is nestled along the mountainside and blends beautifully with its surroundings. Its design complements the sandstone rock formations with minimal visual impact on this picturesque landscape, utilizing natural stone, carefully selected paint colours, and thatched roofs. Enjoy the beautiful views of the Huab Valley, desert plains, and distant mountains and the deck will provide hours of relaxed comfort, peace, and tranquillity amongst this unique setting.

Each evening enjoy a delicious buffet and if we are lucky the staff might even put on a special musical performance for us.

 **310 KMS**

 **TWEILFELFONTEIN COUNTRY LODGE OR SIMILAR**

 **BREAKFAST & DINNER AT LODGE**



## DAY 6

### Twyfelfontein World Heritage Site & the 280-Million-year-old Petrified Forest

Twyfelfontein is renowned for its rich collection of rock engravings, which date back thousands of years. This archaeological site showcases the artistic expressions of the San people, featuring over 2,500 individual petroglyphs depicting animals, human figures, and various symbols. The engravings provide valuable insights into the lives, beliefs, and environment of ancient hunter-gatherer societies. The area's stunning landscapes, characterized by red sandstone formations, further enhance its cultural and historical significance.

This morning after breakfast we travel the short distance to the Twyfelfontein Visitors Centre where we shall be guided around the artworks by one of the knowledgeable local guides. The rock engravings are certainly Twyfelfontein's main attraction and can be divided into three categories: iconic imagery (mostly of animals and their footprints, with a few representations of human figures and mythical creatures), pictograms (geometric patterns created by the Khoikhoi), and functional engravings (including grinding hollows and board games). The animal carvings are perhaps the most interesting, including amazingly life-like representations of rhinos, elephants, giraffes, and ostriches. Look out for depictions of penguins and a sea lion, which prove that the San travelled as far as the coast (some 100 km's away) to find food.

Amongst the most iconic images are the Dancing Kudu and the Lion Man. The latter is of particular interest because the handprint at the end of its tail and the number of digits on its paws suggest that it is meant to depict the transformation of a human into a lion. Experts point to this engraving as proof that the Twyfelfontein artworks were created during ritual ceremonies to represent the spiritual journey of the tribe's shaman or medicine man. There are 13 rock painting sites at Twyfelfontein where predominantly human figures are depicted using red ochre.

This afternoon we visit another fascinating nearby site - The Petrified Forest. The name is a bit misleading as it is not exactly a forest, which turned to stone, but rather an

accumulation of enormous fossilized tree trunks about 280 million years old. Scientist found out that these trunks haven't grown in today's Namibia but were washed down a river in ancient times when one of the many Ice Ages ended on the Gondwana continent. This flood also carried a lot of sand and mud which covered the trees to such an extent that air intrusion was prevented and consequently no decay took place. The organic material of the trunks was conserved. Due to enormous pressure and over a period of millions of years even the finest structures of the wood have been dissolved by silicic acid and replaced by quartz. The result is perfectly conserved and completely petrified trunks.

Thanks to erosion many of these trunks are now exposed and amongst many smaller specimens two fully exposed trees measuring up to 45 m have been discovered. Geologists did some research on the trunks and found out that the trees belong to the family of the Cordaites tree, which grew a long time ago in today's Europe and was the ancestor of firs and spruces.

Additionally, to the petrified tree trunks some beautiful specimen of the Welwitschia Mirabilis can be seen here. The Welwitschia Mirabilis is named after Friedrich Welwitsch, a botanist who discovered the plant in the mid-19th century in Angola. The Welwitschia is often called a living fossil due to the fact that they are very long-living plants. Some Welwitschias are said to be 1500 years old and even older. The plants are endemic to the Namib Desert and only consist of a root a small stem and two leaves.

We return to our comfortable lodge where we have time for a swim in the beautifully built rock pool before meeting on the terrace for an aperitif as we watch the sun set over the Namib desert and then adjourn to the dining room for another delicious dinner.

 **100 KMS**

 **TWEILFELFONTEIN COUNTRY LODGE OR SIMILAR**

 **BREAKFAST & DINNER AT LODGE**

## DAY 7

### Grootberg Plateau

This morning we leave the rich culture and art work of Tweifelfontein and make our way inland through the Torra conservancy to Palm Wag where we break for lunch.

Amid swaying Makalani Palms and robust Mopane trees nourished by underground water, the Palm Wag lodge overlooks the sweeping northern Damaraland landscape peppered with green Euphorbias – a real oasis in the middle of a vast wilderness. This area is a refuge for the black rhino and lion, and home to the famous desert elephant that follow the ephemeral rivers spanning the land like arteries of life. From here we continue inland to the impressive Grotberg Plateau where our amazing lodge is located on the very edge of the escarpment. As you embark into the vast expanses of the conservancy around Grootberg Lodge, it's near impossible to envision a time when these majestic landscapes were void of wildlife.

The rich tapestry of diverse species thriving in the ≠Khoadi //Hoas Conservancy stands as a testament to the remarkable turnaround from the barren lands of yesteryears. It has taken the determined efforts of farsighted conservationists, government entities, private concerns, and the once marginalized local community living here to change the outcome of this area and its inhabitants. Now, it's a global triumph marked by the resurgence of endangered species such as black rhinos, desert-adapted lions, and elephants.

In the early '90s, the area grappled with a wildlife dearth as a consequence of human-wildlife conflicts. Back then, wild creatures were seen as pests by commercial farmers, posing a threat to local communities' livelihoods. Consequently, animals were more valuable deceased than living.

Unrestrained poaching and the persecution of so-called "troublesome" animals like elephants and lions led to their relentless decimation. Meanwhile, antelope and zebra were hunted to near extinction for their meat and hides, leaving the land barren. A pivotal shift emerged with the establishment of the Grootberg Farmer's Union in 1990, setting the stage for the formation of the ≠Khoadi //Hoas Conservancy.

Grootberg Lodge materialized through contributions from the European Union, marking the first community-owned lodge. Not just an economic boost, the lodge provided regular employment, became a financial resource for social projects, and bolstered community initiatives.

This metamorphosis in conservation and education empowered the community as custodians. The conservation value became apparent and ignited a wave of former poachers turned zealous conservationists. Their unparalleled knowledge of the terrain made them indispensable in conservation roles.

We check into our lodge and you might like to cool off with a refreshing swim in the pool overlooking the Klip River Valley or just a cooling drink on the terrace. In the late afternoon we meet up again for a Sundowners Safari which will take us across the Etendeka Plateau. Witness a diverse array of wildlife, from the usual sightings of oryx or kudu to the striking Hartmann's zebra, and perhaps even a glimpse of a leopard or lion. Jackals and antelopes are plentiful, while the elusive klipspringers, although rarer, might occasionally be spotted on the steep cliffs. To enhance this serene experience, the scenic views of the valley and the deep immersion into the African bush will undoubtedly leave you in awe.

We return our lodge for our first delicious home cooked meal.

**130 KMS****GROOTBERG LODGE OR SIMILAR****BREAKFAST & DINNER AT LODGE**

## DAY 8

### Grootberg Lodge

Today you are free to just relax or partake in a number of optional activities including elephant and rhino tracking, game drives and nature walks. After our dinner on the first evening the Activities Staff will wander around each table speaking with the guests and explaining the options which are available.

 **GROOTBERGI LODGE OR SIMILAR**

 **BREAKFAST & DINNER AT LODGE**



## DAY 9 & 10

### Dolomite Lodge - Etosha National Park

This morning we travel to the Etosha National Park through the remote northern region which was restricted to travellers and an unspoilt area favoured by predators. Etosha Game Park was declared a national park in 1907 and is home to approximately 114 mammal species, 340 bird species, 110 reptile species, 16 amphibian species and surprisingly, one species of fish.

The following two days we shall explore Damaraland - a major highlight of our tour. Namibia's primary wildlife reserve, Etosha, will be your home for the next five nights. You will stay on the western side at the newly built Dolomite for the first part of your Etosha safari, before moving into the more central part, where you will stay at Okaukuejo. The area and vegetation are very different to the south-eastern and eastern part of the park and the Hartmann's Mountain zebra can be found here. In this area and with a more undulating landscape, it makes for a very different wildlife experience. White dust and clay, which makes up the Etosha Pan, turns to a reddishbrown soil during this time which may lead you to believe you have entered an entirely new park when you visit.

Dolomite Lodge consists of a spacious reception, lounge, bar and restaurant area with a walkway leading to thatched, ensuite chalets nestled amongst the rocky outcrops which provide privacy with dramatic and panoramic landscape views. The lodge's interiors are designed to harmonise with the natural surroundings, characterized by weathered dolomite rock formations - mopane trees, moringa trees and savannah woodland. With no fewer than 15 waterholes in the surrounding areas, Dolomite Lodge presents great wildlife spotting opportunities. Specially arranged game drives, operated by knowledgeable guides, take you to parts of the park previously only known to conservationists.



**200 KMS**



**DOLOMITE LODGE OR SIMILAR**



**BREAKFAST & DINNER AT LODGE**

## DAY 11 & 12

### Etosha National Park – Okaukuejo

Located just south of the boundary of Etosha National Park in north-western Namibia, Etosha South makes up the southern region of this wild paradise.

The national park can be accessed via the southern entrance at Anderson's Gate. Visitors can catch a glimpse of a variety of wildlife including lion, giraffe, elephant, white and black rhino, and a multitude of plains' game. Popular activities include game drives, tracking rhinos on foot, guided nature walks or watching the sunset over this magnificent landscape.

Today we take a game drive to Okaukuejo camp in the heart of the Etosha National Park. At this lodge you can enjoy game viewing at the waterhole in the comfort of your accommodation. You can take a swim in the swimming pool or from sunset till late into the evening, the group can watch animals drink at the floodlit waterhole.

Our next day will be taken up with game drives, visiting the many waterholes in the park and then relaxing in our extremely comfortable waterhole chalets. Okaukuejo is located 17 kms from the southern entrance of the park, Anderson Gate. Okaukuejo is the oldest tourist camp in Etosha and it also functions as the administrative centre of the park. Okaukuejo is also home to the Etosha Ecological Institute. It is situated at the western end of the Etosha Pan. Facilities include a restaurant, bar, shop, swimming pool, kiosk and luxurious chalets. The main attraction of this lodge is that it overlooks a permanent waterhole which is floodlit at night. Here, a wide diversity of wildlife congregates and interact, from lion to rhino to elephant and antelope. The spectacle starts at dawn, with animals coming in large numbers to quench their thirst. The activity continues throughout the day until late at night. In the early evenings, it is not uncommon to have black rhino, elephant and lion all drinking at the same time.



**255 KMS + GAME DRIVES**



**OKAUKUEJO WATERHOLE CHALETS OR SIMILAR**



**BREAKFAST & DINNER AT LODGE**

## DAY 13

### Namutoni Lodge, Etosha National Park, Namibia

Today we move onto our 3rd lodge in Etosha National Park to discover some more amazing African wildlife.

Namutoni is the perfect setting for a cultural adventure in the African savannah. It is located in the eastern section of Etosha in close proximity to the Fisher's Pan – a renowned destination for a variety of birdlife including breeding colonies of flamingos. Namutoni itself also overlooks the King Nehale waterhole which is a haven for big game. The resort is built in the old German fortress which dates back to the early 1900's.

Our lodge is located on the edge of the great Etosha pan – the largest salt pan in Africa, approx. 130 km's long and 50 km's wide. It is in fact so large it can be viewed from space. The pan was originally a lake but over time the earth's climate forced the rivers that once fed the lake to change course and flow into the Atlantic Ocean. There are at least 10 waterholes on this part of the pan so there are lots of opportunities for us to view wildlife during our safari as we drive between our two lodges.

 **130 KMS**

 **NAMUTONI LODGE OR SIMILAR**

 **BREAKFAST & DINNER AT LODGE**



## DAY 14 & 15

### Kavango River, Namibia

Our journey continues as we drive towards the Caprivi Strip to the town of Rundu and on to our lodge. In the late afternoon, experience another magnificent African sunset on a sundown river cruise on the famous Kavango River.

This is the natural border between Angola and Namibia and during our sunset cruise we shall gain an insight into how the people of this region live as we watch them going about their daily chores.

The next morning is a cultural discovery at the Mbunza Living Museum. The main focus of the Mbunza Living Museum is to provide visitors with a detailed and authentic insight into the traditional, pre-colonial culture. The Living Museum, situated at the Samsitu Lake, is a traditional village of the Kavango, who have lived in this area for centuries. Experience the daily life in an authentic village, including craftsmanship (production of clothing, mats, jewellery and baskets) and a traditional kitchen. Listen to some old stories of the Kavango and get to know some of the special arts - like pottery, wood carving and blacksmithing. Participate in a short bushwalk, where stories are shared and learn ancient knowledge of plants and fishing techniques.

Namibia's Nkwazi Lodge is situated in the north of Namibia overlooking the Okavango River, only 21 kms east of Rundu. Its location on the banks of the river is idyllic and very peaceful. Accommodation is in comfortable thatched chalets with modern facilities including a swimming pool. The lodge actively supports the local community with their development and educational programmes.



**367 KMS**



**NKWAZI LODGE OR SIMILAR**



**BREAKFAST & DINNER AT LODGE**



## DAY 16 & 17

### Cavprivi, Namibia

This morning we leave the Rundu region and travel to the beautiful Shametu River Lodge which is situated on the banks of the Okavango River on the Eastern Caprivi of Namibia. In the afternoon you will have time to relax and enjoy the luxurious solitude of the lodge with a magnificent view of the unique Popa Falls.

In the late afternoon we will enjoy a sundown cruise on the Okavango River. Relax as we glide gently downstream and watch the hippos frolic in the water while you try to spot the shy crocodile lurking in the reeds. Bird lovers will be entertained by the Fish Eagle and various other bird species current to the season.

Near the conclusion of the cruise our river guide will take us to the Popa Falls where we can step onto the island overlooking the river with a great view of the falls. This is a perfect spot to enjoy a "sundowner" as we watch the sun setting over the "Caprivi"!

The next day you are free to relax and enjoy the facilities of the hotel and savour the beautiful setting. Why not take the opportunity and indulge in the rich aromas and soothing sensations of an African spa treatment which Shametu Lodge is famous for. The lodge also has daily game drives into Mahango and Bwabwato National Parks so anyone wanting to partake in an optional activity there is plenty to choose from.

At night enjoy the delicious and wholesome dinners prepared in the lovely restaurant.

 **208 KMS**

 **SHAMETU RIVER LODGE OR SIMILAR**

 **BREAKFAST & DINNER AT LODGE**



## DAY 18 & 19

### Chobe National Park, Botswana

The next morning, we head further east along the Caprivi and cross the border into Botswana and onto Kasane, the gateway to the Chobe National Park. Chobe is the second largest national park in Botswana and covers 10,566 square kms and has one of the greatest concentrations of elephants found on the African continent.

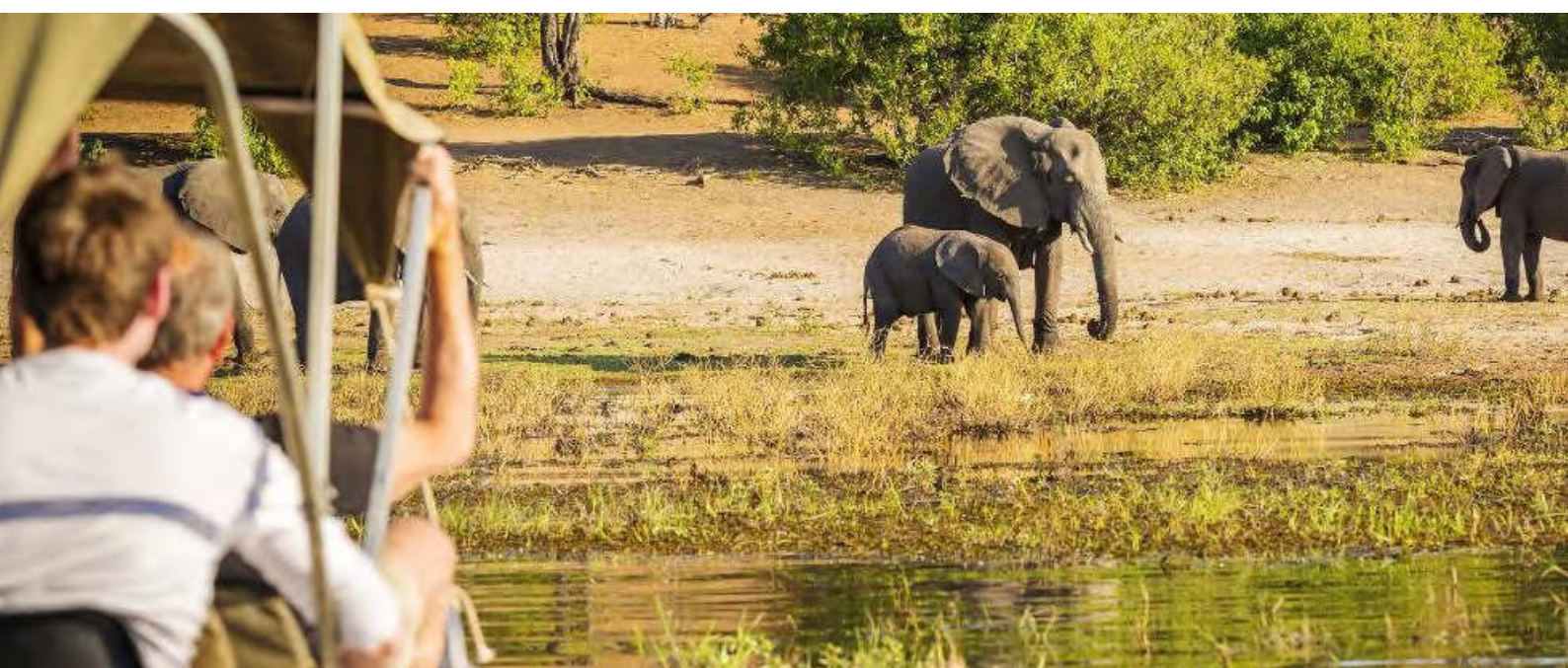
On Day 19 we shall start our morning off with a spectacular 3 hour game drive in Chobe National Park. You will return to the lodge to relax before lunch until our boat cruise on the Chobe River commences at 3.00 p.m. Here we can watch the elephants, hippos, crocodiles and a variety of birds and more without having to reach for our binoculars - you will be close enough for close-up photographs.

Cresta River Lodge is situated in Kasane on the banks of the Chobe River and shares its border with the world-famous Chobe National Park. The Lodge therefore offers an excellent gateway to the Chobe National Park and surrounding area. It has a wonderful open restaurant that features the indigenous and rich flavours of Africa. Scrumptious buffet dinners offer a wide variety of meals from exotic game meats, roasts, barbecues, stir-fries or vegetarian dishes.

 **440 KMS**

 **CRESTA MOWANA SAFARI RESORT & SPA OR SIMILAR**

 **BREAKFAST & DINNER AT LODGE**



## DAY 20

### Chobe National Park to Victoria Falls, Zimbabwe

Continuing our trip, we leave Botswana and cross the border into Zimbabwe and on to the town of Victoria Falls. We settle into our lovely hotel located right beside the Zambezi River - it is a wonderful place to finish our African Walkabout Safari.

Our hotel has a beautiful pool and the horse- shoe designed accommodation is set in a delightful garden. The property runs right down to the banks of the Zambezi River where there is an abundance of birdlife.

Warthogs roam freely around the extensive lawns. In the afternoon we shall take you on a tour of the mighty Victoria Falls; known locally as Mosi oa Tunya- "the smoke that thunders".

The falls are considered to be the largest in the world based on their width and height. They are roughly twice the height of Niagara Falls and are rivalled only by the famous South American falls - Iguazu. Tonight, you are free to enjoy a meal in the township of Vic Falls or relax in the lovely dining room of our hotel.

A'Zambezi River Lodge is located in Victoria Falls, Zimbabwe and is 25 kms from the airport. The Lodge nestles on the banks of the mighty Zambezi river within the periphery of the Zambezi National Park. The imaginative architecture with its sweeping curve of grass thatch rooms blends well with the lush green lawns.

There is an award-winning restaurant situated at the front of the hotel with wrap-around deck, metres away from the Zambezi River. The open air Amulonga restaurant is open daily for breakfast, lunch and dinner.



**100 KMS**



**A'ZAMBEZI LODGE OR SIMILAR**



**BREAKFAST AT LODGE, FREE EVENING**

# OPTIONAL

## Activities In Victoria Falls

Below is a list of some of the most popular optional activities on offer in Victoria Falls. The rates below are a guide only and are per person and are quoted in \$US. All activities are subject to availability and may require a minimum number of passengers to operate. Certain activities only operate at specific times of the year. For those interested in these optional activities, our guide can book these activities before we arrive at Vic Falls. Approximate prices below:

- 15 Min Helicopter Flight US\$150 excl levies
- 22 Minute Helicopter Flight US\$235
- Sunset Cruise - US\$48
- Dinner Cruise - US\$85 / \$ 160
- Elephant Back Safari (half day) US\$150
- Elephant Interaction - US\$60
- Canopy Tour - US\$53
- Lion Walk (half day) - US\$150
- Tram & Bridge Champagne Sunset Tour US\$75
- Moonlight Dinner Run (tram) US\$170
- Zip Line US\$68
- Rafting (fully day, high water) US\$140
- Flying Fox (cable slide) US\$42
- Canoeing (fully day) US\$150



# DAY 21

## Victoria Falls, Zimbabwe

Today is free for optional activities or just relaxing at our lovely hotel. We end our last evening together with a traditional Zim style meal including entertainment at The Boma Place of Eating.

 **A'ZAMBEZI LODGE OR SIMILAR**

 **BREAKFAST AT LODGE & DINNER AT THE BOMA**



## DAY 22

### Depart From Victoria Falls

We end our tour on the morning after our final breakfast together before our group transfer to the airport at Vic Falls.



# Journey Accommodation

Sossus Dune Lodge, Namibia

**NIGHT 1 - 2**



A La Mer Hotel, Swakopmund

**NIGHT 3**



Etusis Lodge, Usakos

**NIGHT 4**



Twyfelfontein Country, Twyfelfontein

**NIGHT 5 – 6**



Grootberg Lodge, Grootberg

**NIGHT 7 – 8**



Dolomite Lodge, Etosha National Park

**NIGHT 9 – 10**



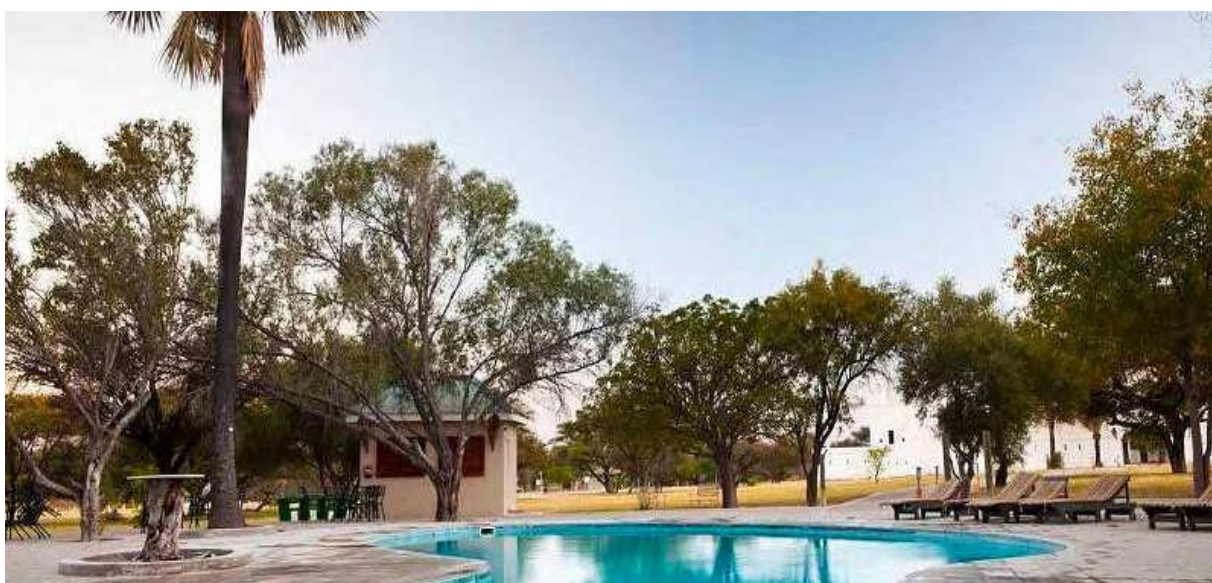
## Okaukuejo Waterhole Chalets, Etosha National Park

**NIGHT 11 – 12**



## Namutoni Lodge, Etosha National Park

**NIGHT 13**



## Nkwazi Lodge, Rundu

**NIGHT 14 - 15**



## Shametu River Lodge, Cavprivi

**NIGHT 16 - 17**



Cresta Mowana Safari Resort & Spa, Chobe National Park

**NIGHT 18 - 19**



A'Zambezi Lodge, Victoria Falls

**NIGHT 20 - 21**



# Journey Notes

## PRICE INCLUDES

- Experienced guides.
- Pick up on day 1 at safari court hotel in Windhoek at 9.00 am and drop off at Victoria Falls airport after breakfast on day 22.
- Price includes transport between Windhoek on day 1 and Victoria Falls on day 22.
- Twin share accommodation from day 1 to day 21 including meals as specified in the notes, N.P. entry fees.

## NOT INCLUDED IN TRIP COSTS

Transport before and after “the walk”, lunches & dinners as specified in the itinerary, evening drinks, in between meal snacks, visa for Zimbabwe (approx. Us\$ 55), personal clothing, laundry, medical expenses and items of a personal nature, optional excursions, tips to guides, drivers, restaurants etc.

## WHAT TO BRING

Daypack, comfortable walking shoes, waterproof raincoat, hat, sunglasses, sun-cream and bathers. Please restrict your luggage to a maximum of 20kgs in a soft barrel bag or backpack not a hard suitcase.

We stipulate this luggage allowance, as an overloaded vehicle is a danger to both the clients and the guide. This does not include photographic equipment and a small daypack. Please don't bring too much clothing, as there are washing opportunities along the way. Please adhere to the allowance specified as space for luggage is limited.

## PRE-WALK PREPARATION

We suggest that prior to your walking holiday you prepare yourself to obtain a level of fitness that will allow you to enjoy your walking holiday.

This, of course, is dependent upon your existing fitness level. Remember, the fitter you are, the more you will enjoy the holiday!

- Start with some short walks which include stairs or hills and increase the length of walks over a couple of months.
- We suggest you carry a backpack with water, camera, jacket, snacks, etc. To assist you with your preparation and allow you to get used to the extra weight on your back.
- We also ask that your boots are comfortable and well-worn in.
- Perhaps enjoy some walks through our local national parks and over uneven surfaces to gain confidence with your boots or new walking shoes.

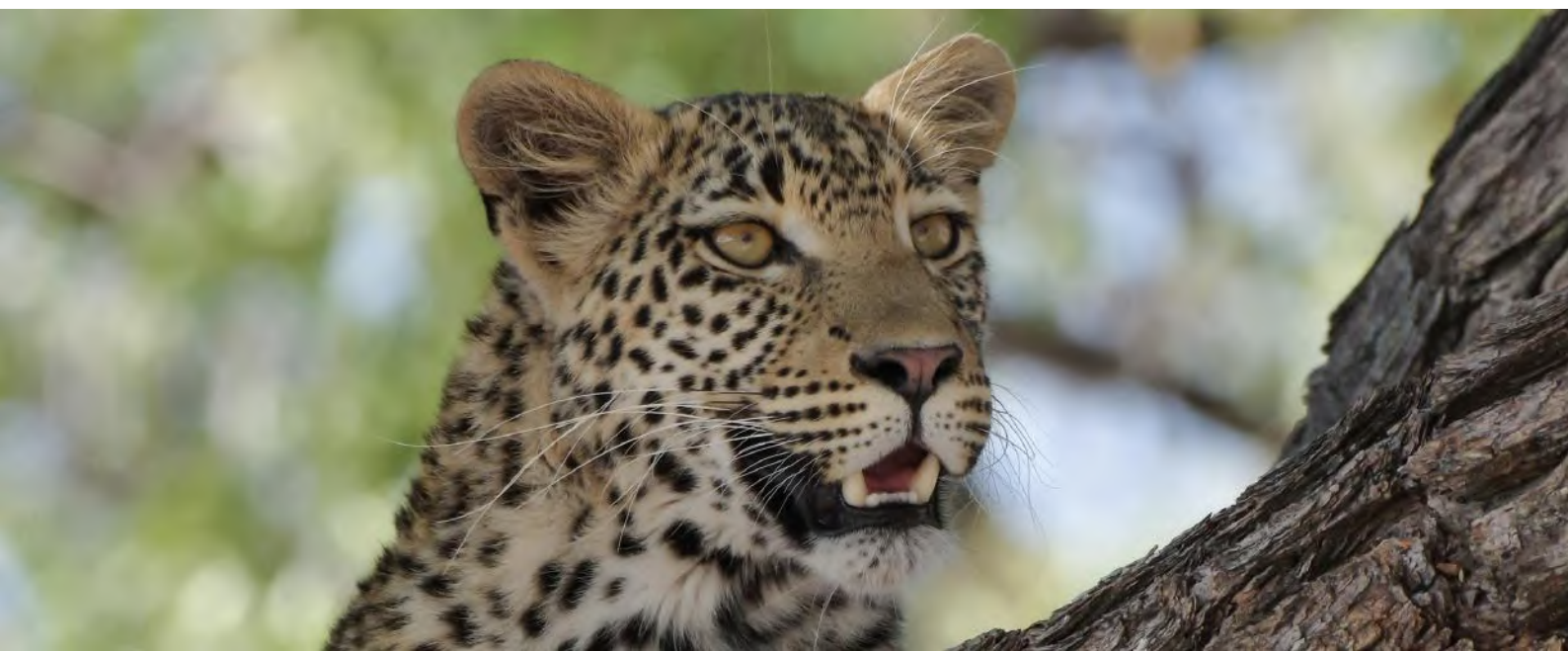
**PLEASE NOTE**

Single rooms can usually be arranged for a supplement. Please ask us for details. We shall endeavour to match people together if they would like to share a twin room with another guest to avoid paying the single room supplement.

However, as this is not always possible 'single' clients will have to pay the supplement. All walks during the 22 days are optional. Guests can choose to have a free day whenever they like.

The walking pace on the walking holiday is leisurely.

Guests do not have to be experienced; however, a good level of fitness is necessary.



# Get in touch and book your journey today.

 0461 277 612

 [info@walkaboutgourmet.com](mailto:info@walkaboutgourmet.com)

## Follow the journey.



### Quality Practices

Committed to exceeding your expectations with great customer service and the highest standards of quality practices, Walkabout Gourmet Adventures complies with the National Tourism Accreditation Program (ATAP).



**Quality  
Tourism**  
Framework



**T-QUAL**  
AUSTRALIAN TOURISM  
QUALITY ASSURED

**Parks**  
VICTORIA

[www.walkaboutgourmet.com](http://www.walkaboutgourmet.com)